

Counter plate

## Steel counter plate.

### CREASED PERFECTLY.

Previously: steel counter plates were only used for the longest runs. Today: all new die cutting machines are equipped for 1 mm thin plates. The steel counter plate is a must for every repeating order. Go ahead and use the advantages of steel counter plates.

They are available in various hardnesses. In various designs. For all requirements. The advantage for you: a smooth production process with well-developed techniques. With high machine speed and great cutting results. Efficiency. From the beginning to the end. Best creasing for highly functional packaging. Easy integration of finishing techniques and braille embossing. Highest Precision. No marks.

---

perfect creases

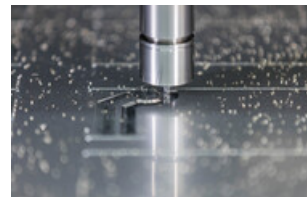
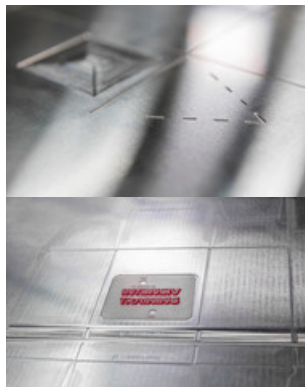
---

minimal set-up times

---

optimal quality of blanks

---



your contact for folding carton

Bernhard Reisser

Industry Manager

phone: +49 7131 918-191

Email: [bernhard.reisser@marbach.com](mailto:bernhard.reisser@marbach.com)