

embossing

## Thinplate foiling system

### Maximum performance in hotfoiling.

The thinplate system is a solution for hotfoiling, which allows female dies and packaging layout to be aligned quickly and very precisely.

The thinplate is a system in which hotfoiling dies are pre-assembled on a special steel plate to perfectly match the print layout. For maximum flexibility, the female dies are mounted so that they can be moved and quickly and precisely aligned to the layout as required. Archiving this position ensures that there is virtually no set-up time for a repeat job.

The thinplate system stands for drastically reduced set-up times for repeat jobs and high-quality [embellished](#) packaging.

---

reduced set-up times for repeat jobs

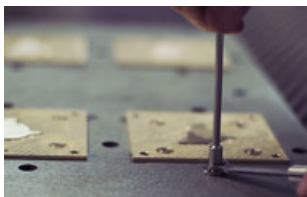
---

maximum flexibility

---

Archiving of the plates

---



your contact for die-cutting technology

Jan Brunner

Sales Director

phone: +49 7131 918-388

Email: [jan.brunner@marbach.com](mailto:jan.brunner@marbach.com)