

Special tools.

Combination tool.

THE PRECISE ONE.

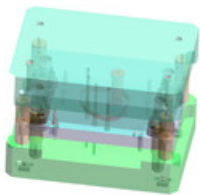
A successful combination of steel rule and solid steel parts. Milled with exact precision. A durable tool with a very small tolerance range. In the automotive industry. And in the pharmaceutical sector. For cutting outer contours and holes with absolute precision. Right from the start. With automatic waste disposal. For car body parts. Interior cladding. Sensors. Band-Aids. And other applications.

The result: perfect die-cutting results. Highest precision. And short set-up times. Ideally suited for long runs. And demanding requirements.

precise results

short set-up times

best die-cutting results



your contact for technical parts & labels

Michael Kiesel

General Sales Manager

phone: +49 7131 918-210

Email: michael.kiesel@marbach.com